



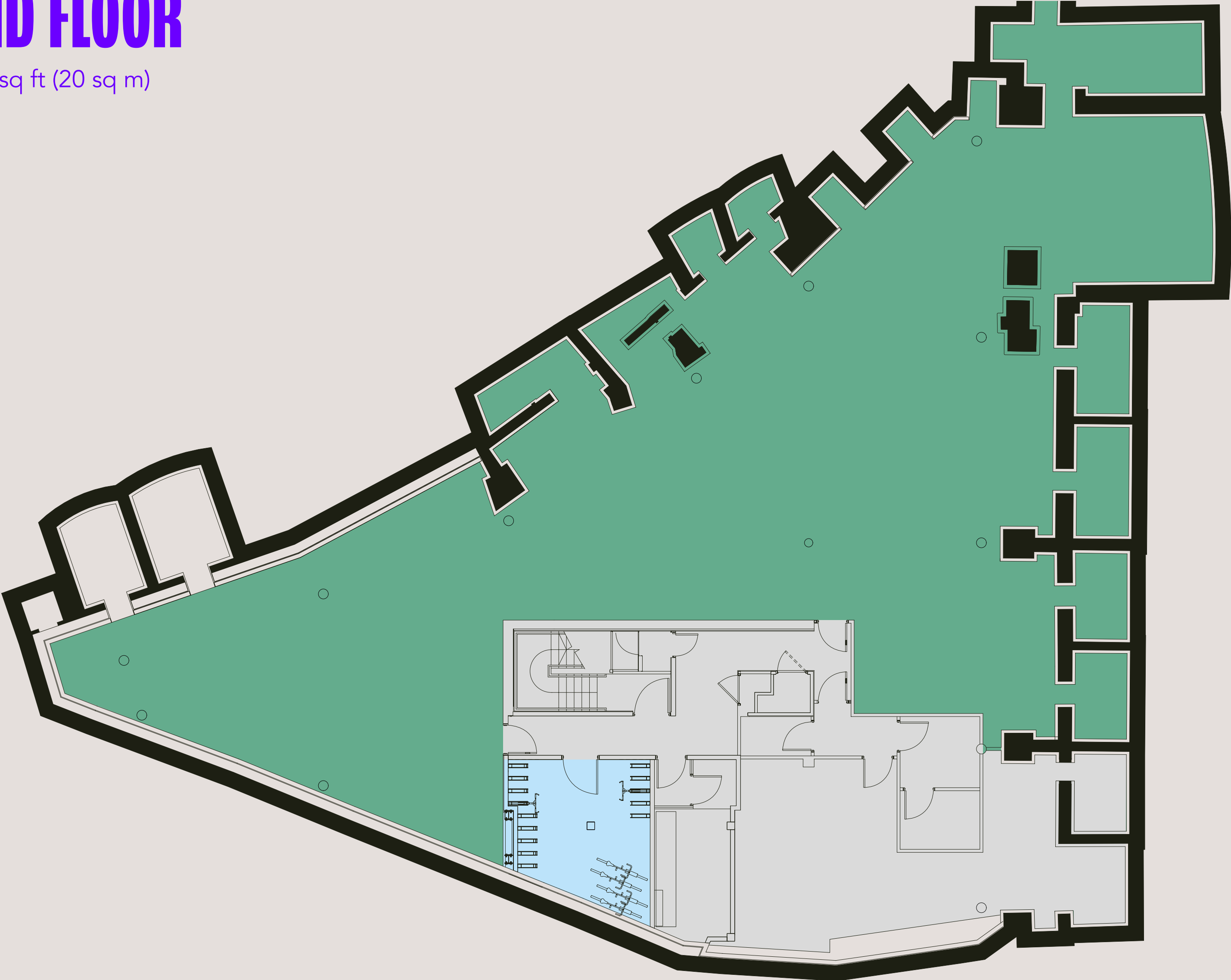
# 74 WIGMORE

MARYLEBONE

FLOOR PLANS

# LOWER GROUND FLOOR

(Cycle storage / shower) 216 sq ft (20 sq m)



Key

- Retail storage
- Bike store
- Core

Floor plans not to scale. For identification purposes only.

# GROUND

(Reception) 499 sq ft (46 sq m)



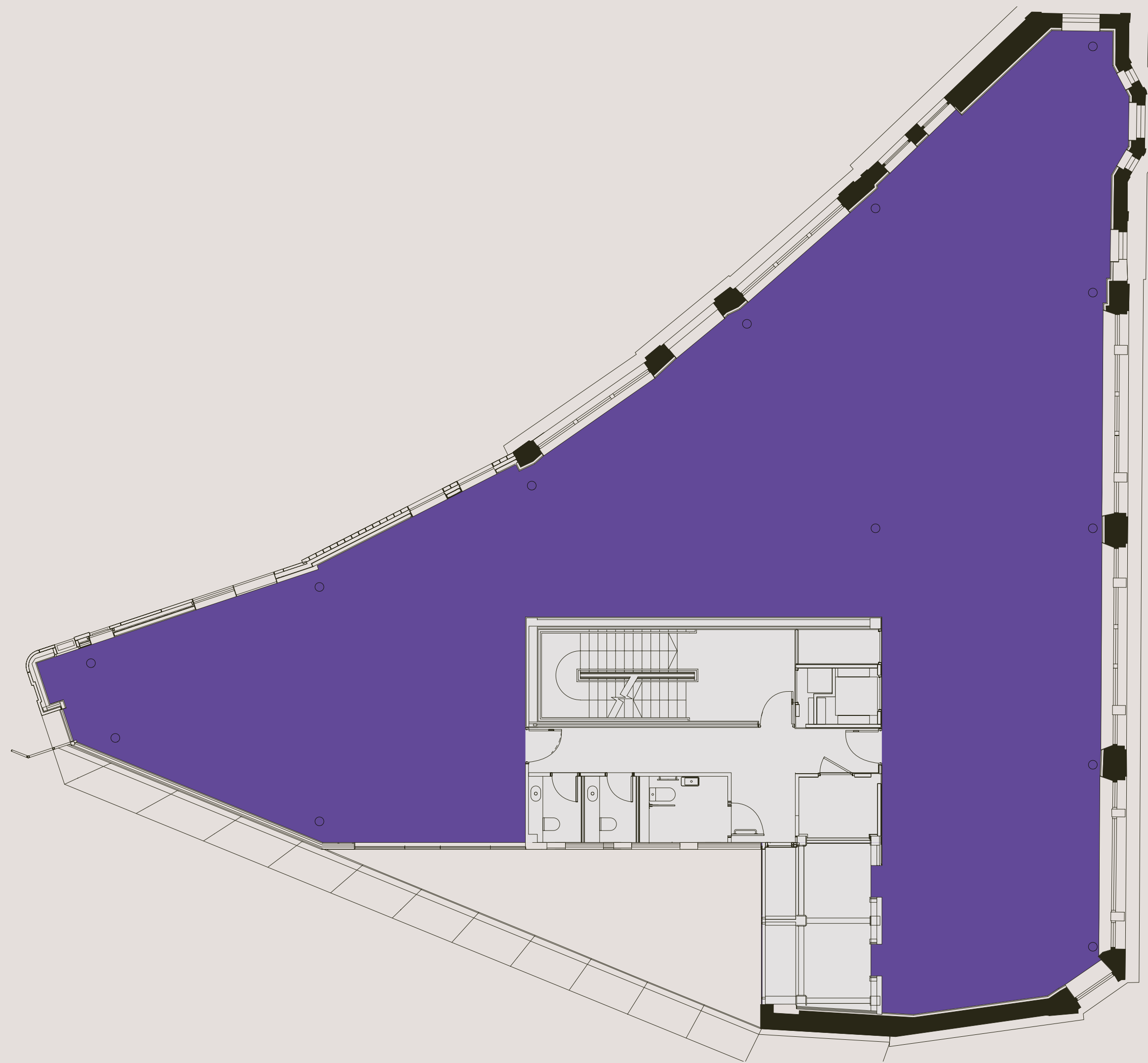
Key

Green square	Retail
Red square	Reception
Grey square	Core



Floor plans not to scale. For identification purposes only.

# 1ST FLOOR

3,630 sq ft (337 sq m)



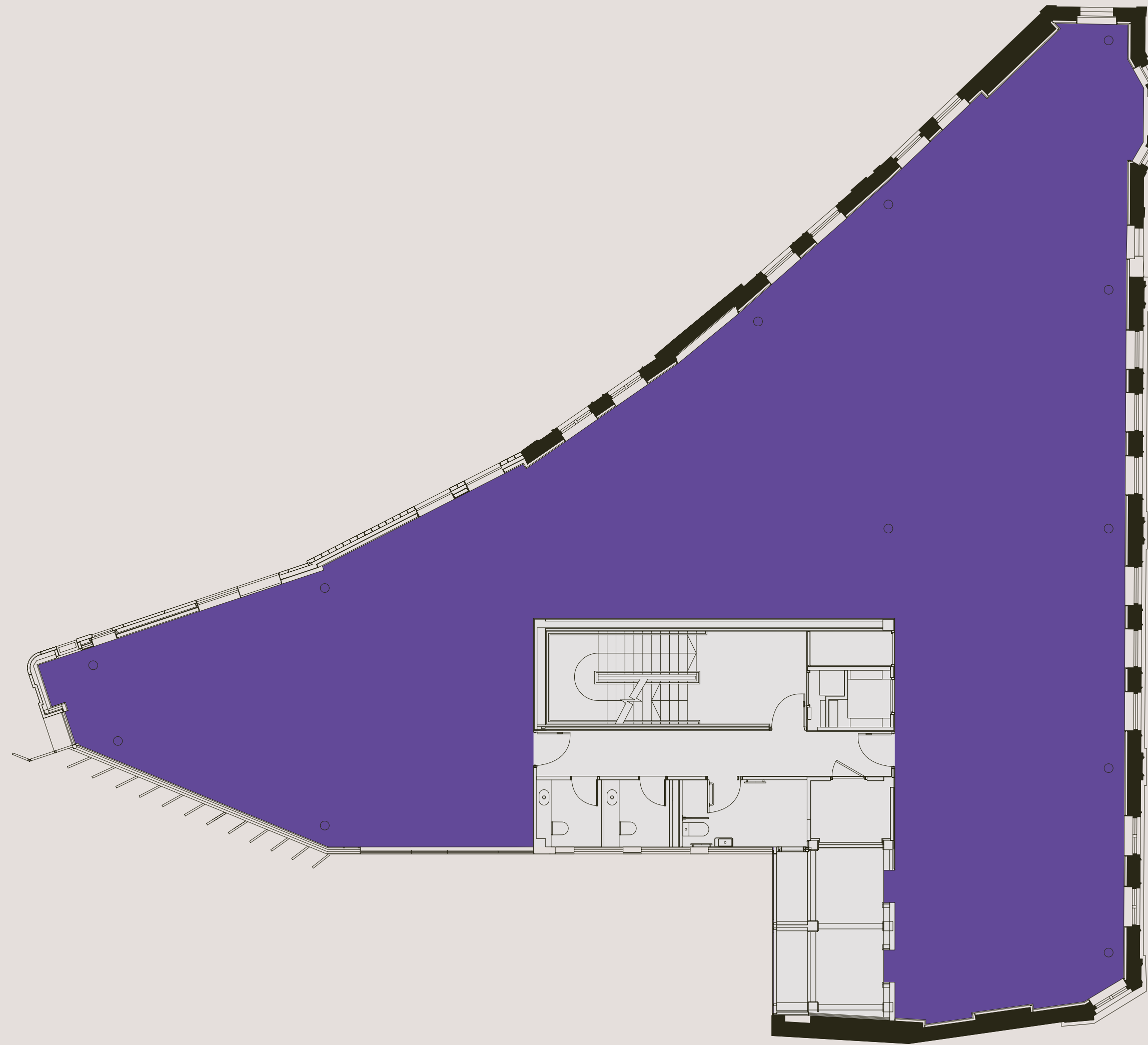
Key

	Office
	Core

Floor plans not to scale. For identification purposes only.

# 2ND FLOOR

3,699 sq ft (344 sq m)



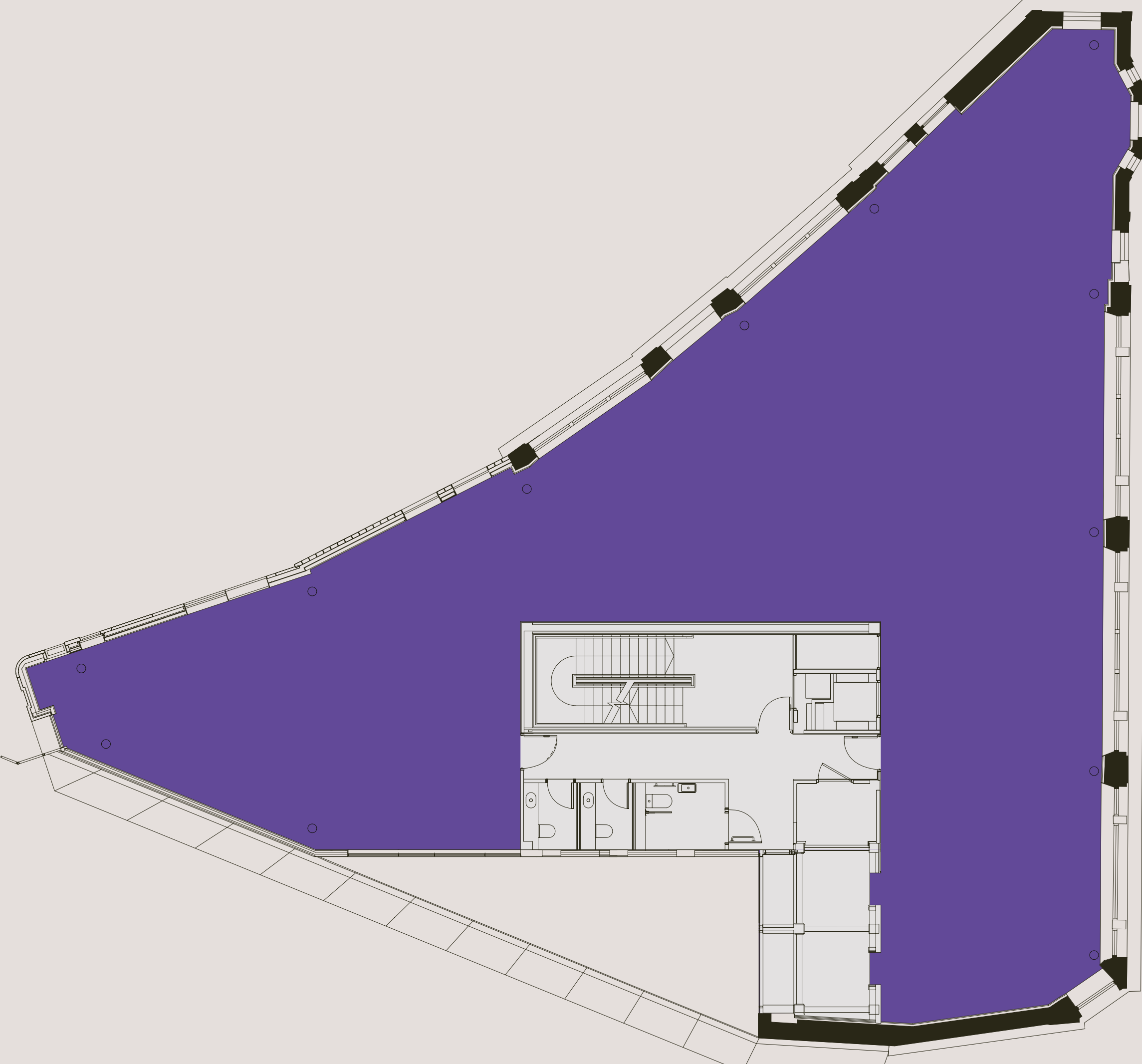
Key

Office
Core

Floor plans not to scale. For identification purposes only.

# 3RD FLOOR

3,714 sq ft (345 sq m)



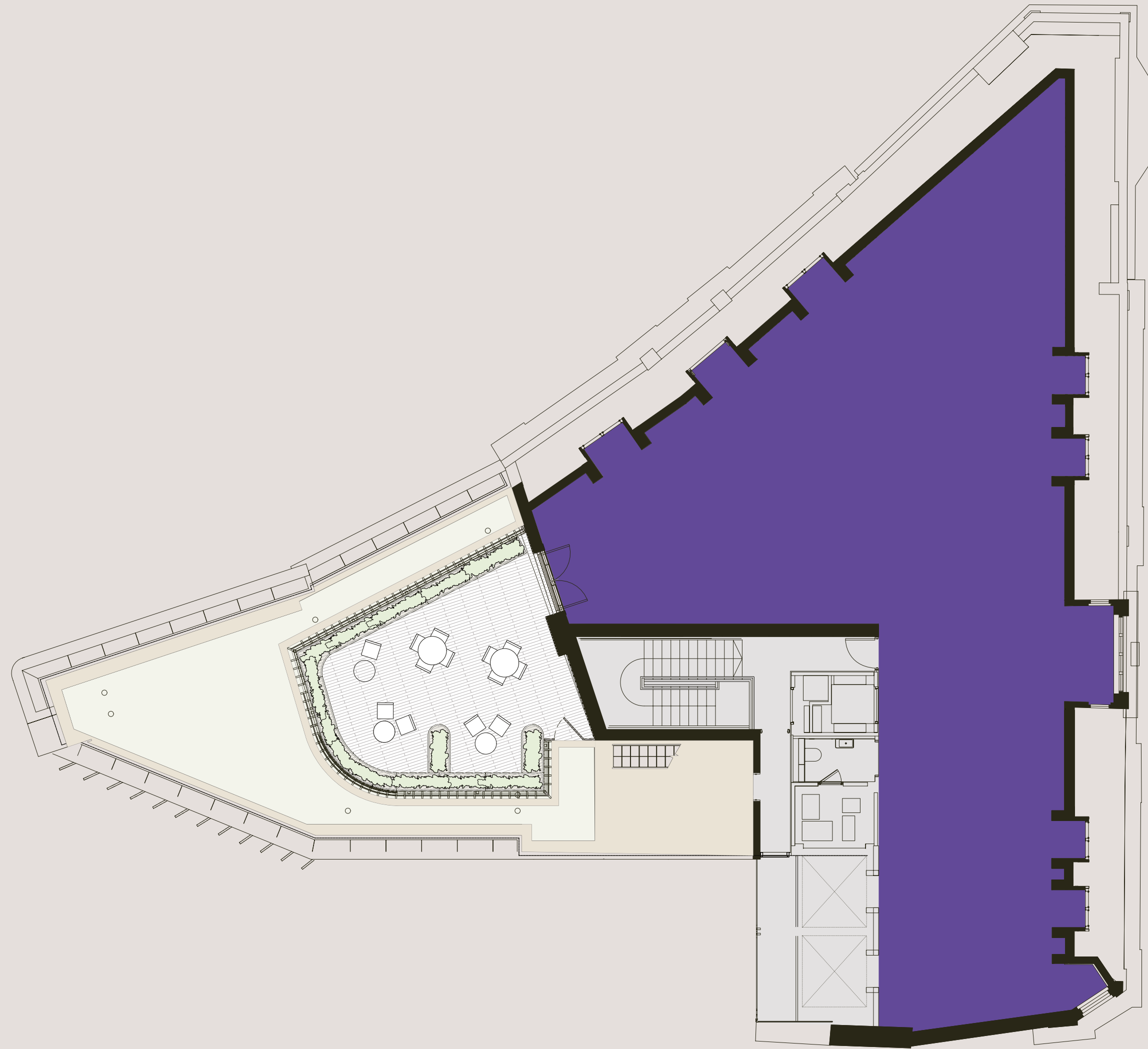
Key

Office
Core

Floor plans not to scale. For identification purposes only.

# 4TH FLOOR

2,131 sq ft (198 sq m)



Key

Office
Terrace
Core

Floor plans not to scale. For identification purposes only.